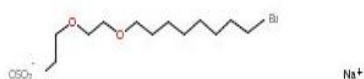
	Dossier technique et réglementaire / <i>technical and regularoty document</i> LAURYL ETHER SULFATE DE SODIUM 70% (LC70) LAURYL ETHER SULFATE DE SODIUM 70%-RSPO-MB (LC70)	Avril 2026 / <i>April 2026</i>
---	---	-----------------------------------

Ce document est utilisable pour nos 2 références : grade conventionnel et grade RSPO-MB. Veuillez à inclure la mention « RSPO-MB » dans votre commande si vous souhaitez cette qualité.

This document is usable for our 2 references: conventional grade and RSPO-MB grade. Be careful to mention "RSPO-MB" in your order if you want this grade.



INCI: **Sodium laureth sulfate (70%)**

N° CAS: 68891-38-3

N°EINECS/ELINCS: 500-234-8

+

INCI : **Aqua**

N°CAS: 7732-18-5

N°EINECS/ELINCS: 231-791-2

DESCRIPTION / DESCRIPTION:

Solution à 70% dans l'eau de matière active de lauryle (2 moles) ether sulfate de sodium / *70% lauryl active ingredient solution (2 moles) sodium sulfate ether in water*

Lauryl sulfate de sodium à base d'alcool gras naturel en C₁₂-C₁₄ éthoxylé avec une moyenne de 2 moles d'OE / *Sodium lauryl sulfate based on natural C12-C14 fatty alcohol ethoxylated with an average of 2 moles of EO*

CARACTERISTIQUES GARANTIES / GUARANTEED SPECIFICATIONS :

CARACTERISTIQUES	SPECIFICATIONS	METHODES / METHODS
Aspect à 20°C / <i>Aspect at 20°C</i>	Liquide gel pate / <i>Gel liquid paste</i>	Visuelle / <i>Visual</i>
Couleur / <i>Color</i>	Blanche à jaune / <i>Colourless to yellow</i>	Visuelle / <i>Visual</i>
Matière active anionique / <i>Anionic active matters</i>	68 – 72 %	ISO 2271 / DGF H-III 10
pH (solution aqueuse 10%) / <i>or pH (10 % aqueous solution)</i>	7 - 10	EN 08/a / DGF H-III 1
Teneur en sulfate de sodium / <i>Sodium sulfate content</i>	≤ 1 %	DGF H-III 8 / ENT 11/c

Ces éléments seront repris sur nos BA / *these elements will be on our CoA*

CARACTERISTIQUES A TITRE D'INFORMATION / ADDITIONAL INFORMATION:

Chlorure de sodium / *Sodium chloride* max 300 ppm

Conforme aux exigences vegan / *Conform to vegan requirements*

ISO 16128 :

NI = 0 NOI = 0.82 OI = 0 OOI = 0

UFI code : T00W-60XV-K005-G5XQ or E00W-UOPT-T009-F134


APPLICATIONS :

Technique, cosmétique / *Technical, cosmetic*


CONDITIONNEMENT STANDARD / STANDARD PACKAGING:

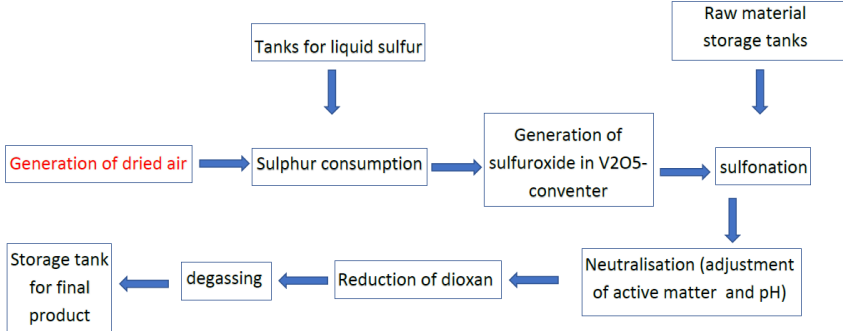
IBC 1000 kg, fut plastique de 220kg, bidon de 25 ou 50 kg / *1000kg IBC, 220kg plastic drum, 25 or 50kg barrel*

Matière première classifiée comme dangereuse (voir FDS) / *Raw material classified as dangerous (see MSDS)*

	Dossier technique et réglementaire / <i>technical and regularoty document</i> LAURYL ETHER SULFATE DE SODIUM 70% (LC70) LAURYL ETHER SULFATE DE SODIUM 70%-RSPO-MB (LC70)	Avril 2026 / <i>April 2026</i>
---	---	-----------------------------------

Additives	Doesn't contain Acetone / Acrylamide / Aluminium /Amidoamines /Amines /Dichloracetic acid /Formaldehyde /Maltodextrin /Methanol /Monochloracetic acid /Mycotoxins /Organohalogens /Sulphites Contain ethylene oxide max 10ppm and 1.4 dioxane max 30ppm	
Allergen	Doesn't contain food allergens (1169/2011) and cosmetic allergens (1223/2009 & 2023/1545)	
Animal Testing	Has not been tested on animals since 31st December 1985	
BSE - Bovine Spongiform Encephalopathy	No risk for BSE	
California Prop 65	The product (CAS: 68891-38-3) is not listed	
Carcinogenic, Mutagenic and Reprotoxic (CMR)	Doesn't contain CMR excepted Ethylene oxide < 10ppm 1.4 dioxane < 30ppm	
Composition	Sodium Laureth Sulfate = 68-72% + 30% water + impurities: sodium sulfate 7757-82-6 max. 0.6 % sodium chloride 7647-14-5 max. 0.03 % unsulfated matter 68439-50-9 max. 3.0% 1.4 dioxane 123-91-1 max 0.003%	
Cosmetic	Conform to regulation (EC) No 1223/2009 of the European Parliament and the Council on cosmetics products	
Cosmos / Ecocert	This product contains palm or palm oil kernel derivate. Our reference " LAURYL ETHER SULFATE DE SODIUM LC70 " is not accepted by cosmos because derivate from not certified palm oil If you want Ecocert accepted grade, you must order " LAURYL ETHER SULFATE DE SODIUM LC70 -RSPO-MB "	
Danger	This product is classified as dangerous in accordance with CLP and not applicable with ADR	
Dioxane	This product contains 1,4 dioxane (max 30 ppm)	
Ecolabel	<i>No data available</i>	
European Pharmacopeia	Not concerned	
Food	Is not a food grade product	
Genetically Modified Organisms (GMO)	Doesn't contain OGM	
Inventories	Listed in chemical inventories: Australia AICS – Canada DSL – China IECSC – Europe EINECS – Japan ENCS –	Korea ECL – New Zealand NZIOC – Philippines PICCS – Taiwan TCSI – Turkey KKDIK – USA TSCA
Geographic origin (for plant)	Asia (Indonesia, Malaysia..)	
Glycol ether	Doesn't contain glycol ether	
Halal	Not Halal certified	
Heavy Metals	Can contain heavy metal (max 3 ppm : iron)	
HS code	34023990	
Irradiation / ionization	Has not been irradiated for preservation	
Kosher	Not kosher certified	

	Dossier technique et réglementaire / <i>technical and regulatory document</i> LAURYL ETHER SULFATE DE SODIUM 70% (LC70) LAURYL ETHER SULFATE DE SODIUM 70%-RSPO-MB (LC70)	Avril 2026 / April 2026
---	---	----------------------------

Latex	Doesn't contain latex
Manufacturing location	<i>No data available</i>
Microbiological data	<i>No data available</i>
Microplastics	we do not add any microplastic materials to our products during the manufacturing process. Nevertheless, it is common knowledge that not all microplastic contaminations can be removed from for example water
Nanomaterials	Doesn't contain nanomaterials
Nitrosamine	Not expected
Nutritional data	Not concerned – is not a food grade product
Origin	Vegetable (palm oil and/or palm kernel oil), synthetic
PAH/PFAS	PAH and PFAS are not expected
Pesticide	Doesn't contain pesticides
Phthalate	Doesn't contain phthalate
Preservative	Doesn't contain preservative
Process	
REACH	The substance (CAS: 68891-38-3) is registred 01-2119488639-16
Residual Solvents	Doesn't contain solvent residues
RSPO	This product is derived from PKO. PKO = 70% Our reference " LAURYL ETHER SULFATE DE SODIUM 70% " is not RSPO certified If you want RSPO certified grade, you must order " LAURYL ETHER SULFATE DE SODIUM 70% - RSPO-MB "
Shelf Life	1 year
Substances of Very High Concern (SVHC)	Contains 1,4 dioxane 0.003%
Volatiles organic compounds (VOC)	Doesn't contain VOC

----- END

Ce document annule et remplace tous documents techniques et réglementaires précédents / *This document cancels and replaces all technical and regulatory previous documents.*